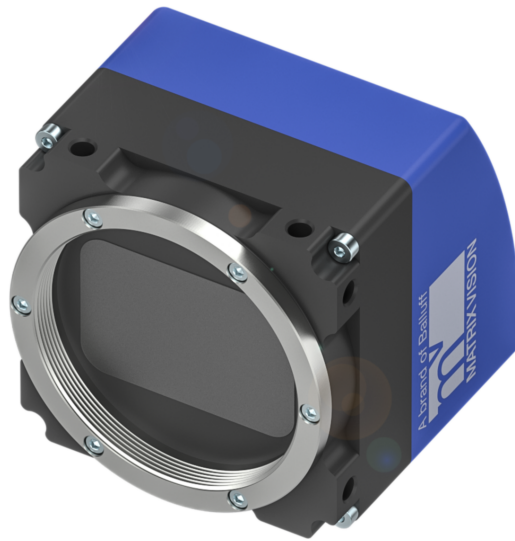


MATRIX VISION Industrial Cameras
mvBlueFOX3-4 Series - Standard



BVS CA-SF4-xxxxxx-(1)(2)(3)(4)(5)(6)-001

mvBlueFOX3-4 / BVS CA-SF4-xxxxxx-(1)(2)(3)(4)(5)(6)-001
 USB3 Vision industrial camera

xxxxxx Model
 See table below

(1) Handling
 1 = Standard handling
 2 = Extended temperature range test

(2) Lensholder
 N = M42x1 mount, 12mm factory-set backfocus, fixed square filter
 P = M42x1 mount, 45.5mm factory-set backfocus, fixed square filter
 Q = F-Mount, 46mm factory-set backfocus, fixed square filter
 T = TFL mount, 17.5 mm factory-set backfocus, fixed square filter

(3) Filter
 0 = Without filter
 1 = IR-Cut
 2 = Glass filter
 3 = Daylight cut

(4) Housing
 1 = Standard housing, blue with logo, aluminium

(5) I/O
 0 = Without I/Os
 2 = Standard I/Os

(6) Software
 0 = None

Balluff model name	Model name	Resolution	FPS	Sensor	Pixel size
BVS CA-SF4-	BF3-4-				
0169ZG/C	0169ZG/C	16.9 MP (5472 x 3080)	26.5/22.5*	IMX387 (4/3", GS, CMOS)	3.45 µm
0196ZG/C	0196ZG/C	19.6 MP (4432 x 4432)	22.7/19.3*	IMX367 (4/3", GS, CMOS)	3.45 µm
0315ZG/C	0315ZG/C	31.5 MP (6480 x 4856)	14.4/12*	IMX342 (APS-C, GS, CMOS)	3.45 µm

G/C = Monochrome and color models available
FPS = Frames per Second
GS = Global Shutter
RS = Rolling Shutter
** = Burst Mode/Streaming*

MATRIX VISION Industrial Cameras mvBlueFOX3-4 Series - Standard



Basic features

Approval/Conformity	CE UL Listed EAC WEEE
Standards	GenICam EMVA 1288 USB3 Vision
Version	USB3 Vision industrial camera

Electrical connection

Connection 1	USB3: MicroB-Female, 9-pin
Connection 2	Power/ IO: HIROSE-Male, 12-pin
Polarity reversal protected	yes
Short-circuit protection	no

Electrical data

Current draw max.	500 mA
Operating voltage Ub	10...28 VDC

Environmental conditions

Ambient temperature	0...45 °C
EN 60068-2-27, Shock	-
EN 60068-2-6, Vibration	-
IP rating	IP30
Relative humidity	20...80%
Storage temperature	-20...60 °C

Remarks

Not included in scope of delivery: Camera lens, filter, light, connection cable, power supply

* Refer to manual for exact values

For more information about MTTF and B10d see MTTF / B10d Certificate

Indication of the MTTF- / B10d value does not represent a binding composition and/or life expectancy assurance; these are simply experiential values with no warranty implications. These declared values also do not extend the expiration period for defect claims or affect it in any way.

Functional Characteristics

Binning	1x1...16x16 *
Data storage	256 MB
Decimation	1x1...16x16 *
Exposure time	10 µs...20 s *
Image formats	Mono8...Mono16 Bayer8...Bayer16, RGB, YUV *
Trigger Modi	Free run Hardware trigger Software trigger

Interface

Auxiliary interfaces	RS232
Digital inputs	2x PNP galvanically isolated
Digital outputs	4x PNP galvanically isolated
Interface	USB 2.0 / 3.0

Material

Housing material	Aluminium, Powder coated, Painted
-------------------------	--------------------------------------

Mechanical data

Dimension	37 x 37 x 53.8 mm
Lens mount	C-Mount
Weight	175 g

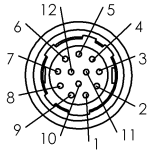
MATRIX VISION Industrial Cameras
mvBlueFOX3-4 Series - Standard

Connector Diagramm

USB3 (MicroB)



Power / IO (Hirose)



- PIN 1: GND
- PIN 2: PWR_IN
- PIN 3: Opto DigOut3
- PIN 4: Opto DigIn0
- PIN 5: Opto DigOut2
- PIN 6: Opto DigOut0
- PIN 7: Opto DigIn_GND
- PIN 8: RS232 RX
- PIN 9: RS232 TX
- PIN10: DigOut_PWR_IN
- PIN11: Opto DigIn1
- PIN12: DigOut1

Product View

BVS CA-SF4-xxxxxx-xNx12x

